

Nimbus Digital Combination Locks

Surface Mounted

Fitting Instructions

The Nimbus Digital Combination Lock can be fitted to cupboards, cabinets and lockers etc. as an original fitment, or as a direct replacement for existing cam locks. It is also retro fitted for a direct replacement for the Zenith Digital Combination Lock series.

Special Notes

Before installing the Nimbus Digital Combination Lock, remove battery pull tab and familiarise yourself with the operation and programming.

Unless manufactured to special order, the lock is supplied in the "PRIVATE" operating mode with a four-digit code.

In this mode, the user must enter a four-digit User Code to open it. The unit will re-lock itself after four seconds. The lock can be opened at any time using the Master Code.

Unless manufactured to special order, the default Master Code is 11 33 55 77 and the default User Code is 22 44.

These codes are common to all standard locks and it is very important that you set your own personal Master and User Codes.

Your lock is not secure until you have changed the default Master Code and User Code.

Keep a safe record of your master code as it is not possible to make any programming changes without it.

Please see programming guide to set your own codes.

Installation Guide - IMPORTANT NOTES

The Nimbus lock can be fitted with two or three screws. Always use the screw position "A" behind the logo button. Use either "B" or "C" (or both if preferred). Before drilling fixing holes, please ensure that the position of the Nimbus Digital Combination Lock when fitted will allow clearance for the selected cam to work.

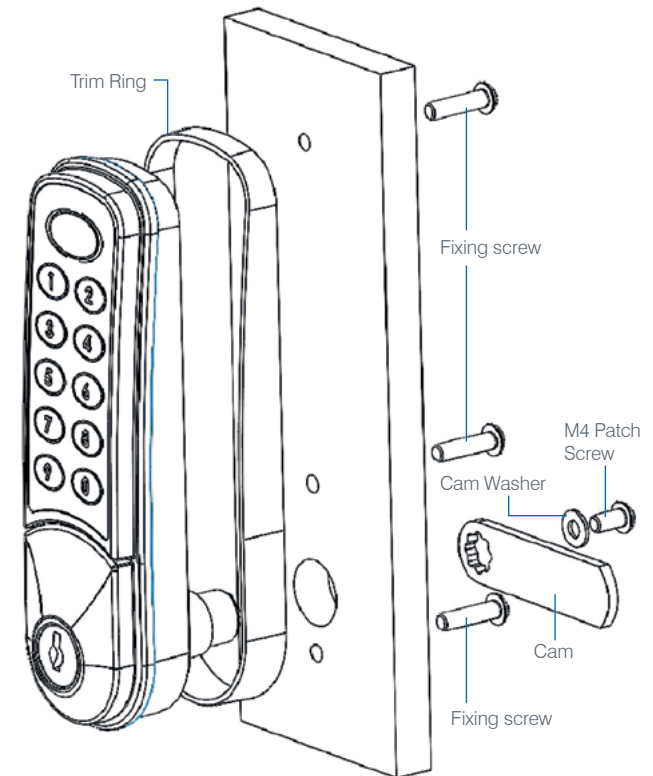
REMOVE BATTERY PULL TAB BEFORE FIXING LOCK

A) New Installation

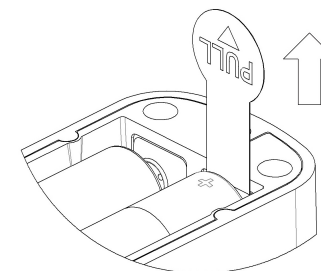
- Step 1** Place template on door and mark TWO (or three if preferred) $\text{\O}4.5\text{mm}$ ($3/16"$) holes (refer to installation diagrams). Use hole position "A" and either "B" or "C". Mark ONE $\text{\O}16\text{mm}$ ($5/8"$) hole.
- Step 2** Drill all the $\text{\O}4.5\text{mm}$ fixing holes and the $\text{\O}16\text{mm}$ clearance hole.
- Step 3** Fit the trim ring to the lock.
- Step 4** Fit the Digital Combination Lock to the door by passing the spindle through the $\text{\O}16\text{mm}$ ($5/8"$) hole.
- Step 5** Fix at least 2 fixing screws to suit your door thickness.
- Step 6** Select the cam which suits your door and frame and attach it to the square shaft at the end of the spindle using the M4 x 8 patch screw and flat washer provided.
- Step 7** Check the operation of the lock using the factory User Code 22 44.
- Step 8** If the lock is functioning correctly, CHANGE THE DEFAULT MASTER CODE 11 33 55 77 and DEFAULT USER CODE 22 44 and program the lock using the programming and operating instructions enclosed.

B) Replacing Existing Cam Lock with the 396- Nimbus Digital Combination Lock

- Step 1** Remove existing cam lock.
- Step 2** Place installation template on the door over the hole left by the cam lock (position "D") and mark TWO $\text{\O}4.5\text{mm}$ ($3/16"$) holes (refer to installation diagrams). Use hole position "A" and either "B" or "C" (or both if preferred).
- Step 3** Drill all the $\text{\O}4.5\text{mm}$ ($3/16"$) fixing holes.
- Step 4** Continue installation from step 3 to 8, above.



Remove battery pull tab before fixing lock



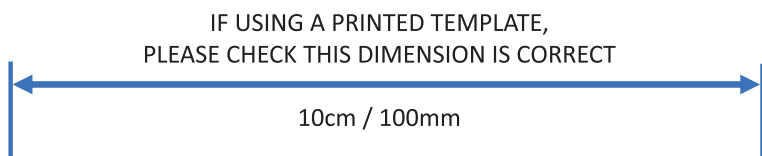
Nimbus Digital Combination Locks

Surface Mounted

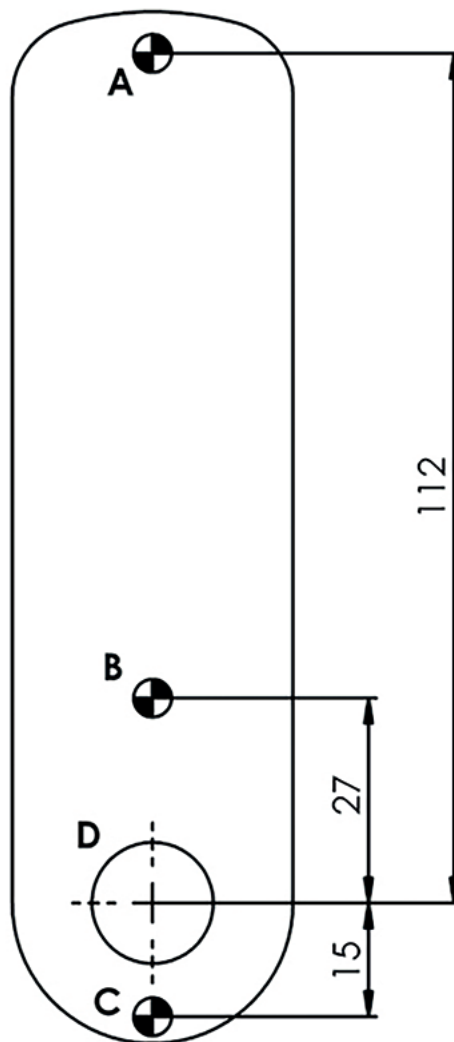
IMPORTANT NOTE

Before drilling fixing holes, please ensure that the position of the lock when fitted will allow clearance for the cam to function.

Please check that template is correct size before use – copies can be distorted.



HOLES A, B & C DIAMETER 4.5 / 5.0mm
HOLE D DIAMETER 16.0 / 16.5mm
ALWAYS USE FIXING HOLE A AND
USE EITHER FIXING HOLE B OR C



LOWE & FLETCHER LTD

Moorcroft Drive, Wednesbury, West Midlands, WS10 7DE, UK
Tel: +44 (0) 121 505 0400
Email: sales@lowe-and-fletcher.co.uk
www.lowe-and-fletcher.co.uk

LOWE & FLETCHER, INC.

650 Airport Place, Norton Shores, MI-49441, Michigan, USA
Tel: +1 (616) 994 0490
Email: sales@loweandfletcherinc.com
www.loweandfletcherinc.com

EURO-LOCKS SA NV

Rue de la Fontaine 8, 6600 Bastogne, Belgium
Tel: +32 61 212 261
Email: sales@euro-locks.be
www.euro-locks.be

EURO-LOCKS SA

1 Rue du Stade, 57730 Folschviller, France
Tel: +33 (0) 3 87 92 61 11
Email: euro-locks@euro-locks.fr
www.euro-locks.fr

EURO-LOCKS GMBH

Am Bruchwald 22, 66280 Sulzbach/Neuweiler, Germany
Tel: +49 (0) 6897 9072 0
Email: vertrieb@euro-locks.de
www.euro-locks.de

EURO-LOCKS SP. Z O.O.

ul. Pawła 29, 41-708 Ruda Śląska, Poland
Tel: +48 (32) 344-78-70, -82, -84
Email: sekretariat@euro-locks.pl
www.euro-locks.pl